



TERM 4 WEEK 2

TERM 4 Week 2

Friday October 20th 2023

Tooleybuc Central School What's on in Term 4 23rd to 27th October - Automotive Work Placement
23rd October to 6th November - Book Fair 24th October - HSC Business Studies Exam 25th October -
Last day of TAFE 30th October - Years 7-10 Exams all week 31st October - HSC Exam Community and
Family Studies 9th & 10th November - Year 10/11 Careers Excursion 13th November - Whole School
Transition Day & Secondary Rollover Day 24th November - Primary Assembly in MPC 1st December -
Whole School Assembly at Tooleybuc Sporting Club 4th to 8th December - Swim School 10th December -
Presentation Night

In This Issue



- **Louisa's Thoughts**
- **School News**
- **ACP&I Report**
- **Head Teacher Report**

- **Community Notices**

Louisa's Thoughts





Welcome back for Term 4. The students have all settled back into the school routine well and it has been fantastic to see students engaged in their learning right across the school. Our HSC students started their exams last week and we wish them well as they continue to complete them in coming weeks.

We have activated our Remind accounts with the first messages (about the upcoming Book Fair) being sent out to the Primary group this week. If you are yet to join, please use the links below.

Primary

<https://www.remind.com/join/4eba62>

Secondary

<https://www.remind.com/join/dabg7a>

Planning for 2024 has well and truly started and I am pleased to announce that Sarah Forster will be joining our primary team next year.

I am looking forward to working with you all again this term and as always if you have any questions or concerns please feel free to contact me at school.

School News



Stand Against Bullying



If your child talks to you about bullying:

1. **Listen** calmly and get the full story.
2. **Reassure** your child that they are not to blame.
3. **Ask** your child what they want to do about it and how you can help.
4. **Visit** www.bullyingnoway.gov.au to find some strategies.
5. **Contact** the school.
6. **Check in** regularly with your child.

School Community Charter



School Community Charter

 **Collaborative. Respectful. Communication.**

The following School Community Charter outlines the responsibilities of parents, carers, educators and school staff in NSW public schools to ensure our learning environments are collaborative, supportive and cohesive.

What our schools provide

NSW public schools work to create positive environments for students, staff and the entire school community that support student learning. We strive to ensure that every student is known, valued and cared for.

The best education happens when parents and schools work together.

The School Community Charter aligns with the NSW Department of Education Strategic Plan 2018 – 2022.



Positive environments

It is important that our NSW public schools are positive environments and that parents and carers are kept informed of students' progress and school announcements.

Parents and carers can expect:

- to be welcomed into our schools to work in partnership to promote student learning.
- communication from school staff will be timely, polite and informative.
- professional relationships with school staff are based on transparency, honesty and mutual respect.
- to be treated fairly. Tolerance and understanding are promoted as we respect diversity.

Ensuring respectful learning environments for all members of NSW Public Schools communities.

We treat each other with respect

We prioritise the wellbeing of all students and staff

Unsafe behaviour is not acceptable in our schools

We work together with the school



Communicating with our schools

Our staff will find a time to talk to you when they can give you their full attention. Please remember that while our staff are in class or dealing with other matters, they may not be available to answer your questions immediately.

Our schools and communities will make sure that written communication is appropriate, fair and easy to read. We encourage you to use email and social media appropriately to connect with your school and stay up-to-date with up-coming events in the school community.

Our guide for parents, carers and students provides useful information about the complaints process: education.nsw.gov.au/about-us/rights-and-accountability/complaints-compliments-and-suggestions/guide-for-parents-carers-and-students

Respectful communication is a right

In all workplaces people have the right to feel respected. Unacceptable and offensive behaviour has no place in our school communities.

To ensure the wellbeing of students, staff and the community in our schools, steps will be taken to address unacceptable behaviour. This may include restricting contact with the school community or, in more serious cases, referral to NSW Police.

Unacceptable behaviour may include but is not limited to:

- Aggressive or intimidating actions, such as violence, threatening gestures or physical proximity.
- Aggressive or intimidating language, including the use of obscenities, making sexist, racist or derogatory comments or using a rude tone.
- Treating members of the school community differently due to aspects such as their religion or disability
- Inappropriate and time wasting communication.



Compulsory School Attendance



Education for your child is important and regular attendance at school is essential for your child to achieve their educational best and increase their career and life options. NSW public schools work in partnership with parents to encourage and support regular attendance of children and young people. When your child attends school every day, learning becomes easier and your child will build and maintain friendships with other children.

What are my Legal responsibilities?

Education in New South Wales is compulsory for all children between the ages of six years and below the minimum school leaving age of 17 years. The Education Act 1990 requires that parents ensure their children of compulsory school age are enrolled at, and regularly attend school, or are registered with the NSW Education and Standards Authority for home schooling.

Once enrolled, children are required to attend school each day it is open for students.

The Importance of arriving on time

Arriving at school and class on time:

- Ensures that students do not miss out on important learning activities scheduled early in the day
- Helps students learn the importance of punctuality and routine
- Give students time to greet their friends before class
- Reduces classroom disruption

Lateness is recorded as a partial absence and must be explained by parents.

What if my child has to be away from school?

On occasion, your child may need to be absent from school. Justified reasons for student absences may include:

- being sick, or having an infectious disease
- having an unavoidable medical appointment
- being required to attend a recognised religious holiday
- exceptional or urgent family circumstance (e.g. attending a funeral)

Following an absence from school you must ensure that within 7 days you provide your child's school with a verbal or written explanation for the absence. However, if the school has not received an explanation from you within 2 days, the school may contact you to discuss the absence.

Principals may decline to accept an explanation that you have provided if they do not believe the absence is in the best interest of your child. In these circumstances your child's absence would be recorded as unjustified. When this happens the principal will discuss their decision with you and the reasons why.

Principals may request medical certificates or other documentation when frequent or long term absences are explained as being due to illness. Principals may also seek parental permission to speak with medical specialists to obtain information to collaboratively develop a health care plan to support your child. If the request is denied, the principal can record the absences as unjustified.

Travel

Families are encouraged to travel during school holidays. If travel during school term is necessary, discuss this with your child's school principal. An Application for Extended Leave may need to be completed. Absences relating to travel will be marked as leave on the roll and therefore contribute to your child's total absences for the year.

In some circumstances students may be eligible to enrol in distance education for travel periods over 50 school days. This should be discussed with your child's school principal.

My child won't go to school what should I do?

You should contact the principal as soon as possible to discuss the issue and ask for help. Strategies to help improve attendance may include a referral to the school's learning and support team or linking your child with appropriate support networks. The principal may seek further support from the Home School Liaison Program to develop an Attendance Improvement Plan.

What might happen if my child continues to have unacceptable absences?

It is important to understand that the Department of Education may be required to take further action where children of compulsory school age have recurring numbers of unexplained or unjustified absences from school.

Some of the following actions may be undertaken:

- Compulsory Schooling Conferences

You may be asked, along with your child, to attend a Compulsory Schooling Conference. The conference will help to identify the supports your child may need to have in place so they attend school regularly. The school, parents and agencies will work together to develop an agreed plan (known as Undertakings) to support your child's attendance at school.

- Application to the Children's Court – Compulsory Schooling Order

If your child's attendance at school remains unsatisfactory the Department may apply to the Children's Court for a Compulsory Schooling Order. The Children's Court magistrate may order a Compulsory Schooling Conference to be convened.

- Prosecution in the Local Court

School and Department staff remain committed to working in partnership with you to address the issues which are preventing your child's full participation at school. In circumstances where a breach of compulsory schooling orders occurs further action may be taken against a parent in the Local Court. The result of court action can be the imposition of a community service order or a fine.

What age can my child leave school?

All New South Wales students must complete Year 10 or its equivalent. After Year 10, and up until they reach 17 years of age, there are a range of flexible options for students to complete their schooling.

Working in Partnership

The NSW Department of Education recognises that working collaboratively with students and their families is the best way to support the regular attendance of students at school.

We look forward to working in partnership with you to support your child to fulfil their life opportunities.

Days missed = years lost

A day here and there doesn't seem like much, but...



More information

Further information regarding school attendance can be obtained from the following websites:

Policy, information and brochures:

Please visit the Department of Education's Policy Library AND The Department's Attendance Matters Website.

The school leaving age:

Please visit the Department of Education's Wellbeing and Learning website.

Do you need an interpreter?

Interpreting services are available on request, including for the hearing impaired. The Telephone Interpreter Service is available 24 hours a day, seven days a week on **131 450**. You will not be charged for the service.

Year 3-4 with Miss Cobban



Stage 2 have had a great start to Term 4! We have been busy learning about the post, with a focus on stamps and postcards. Many students were left wondering why people would send a postcard when a text message would easily convey a message? Additionally, if people wanted to see where their family members were holidaying, couldn't they just search for pictures of the destination and see what Hawaii looked like on google images? Stage 2 had to take a step back in time and cast our minds back to before technology, to fully imagine how exciting receiving mail would have been. Students spent a long time

thinking about what message they wanted to write, thinking about the balance of giving information and asking for some too. After students were happy with the pictures they'd drawn and the messages they'd written, we walked to the post office to visit Glenys. She gave students VIP access behind the counter, where they were able to put stamps on their postcards before posting their mail. Alisha, the students and myself all had a great time and I think... we may have even revived the excitement of post again?!









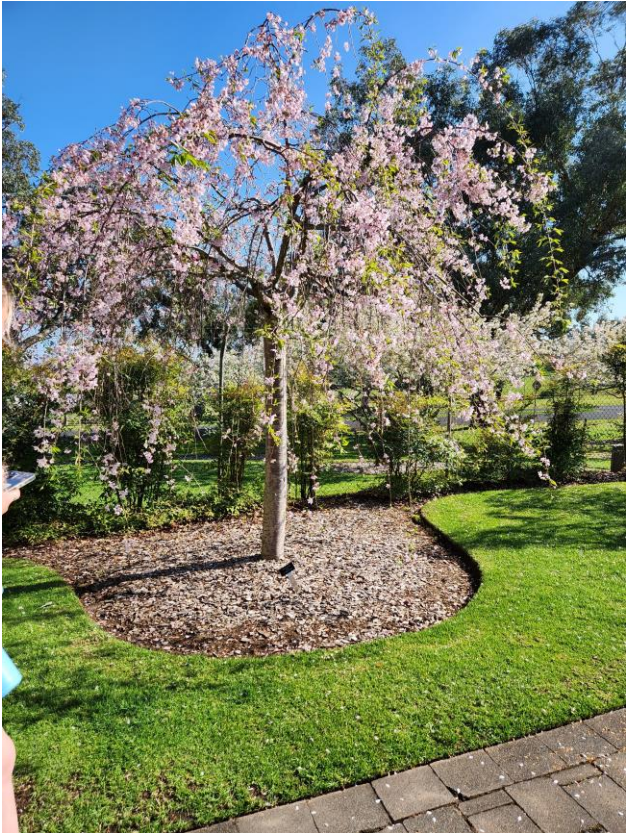
Japanese with Miss Duma



In Term 3 Week 10, Stage 5 Japanese went on a 3 day excursion to Cowra to complement course work for Japanese in hobbies and interests, festivals, clothing, discussing location, and seasons. We also had the opportunity to look further into the history of the relationship between Australia and Japan, in particular in relation to pre and post-World War II. Students visited the Cowra Japanese Gardens and

Cultural Centre, Cowra Prisoner of War Campsite, Cowra Japanese War Cemetery and Cowra War Cemetery, Cowra Visitor Information Centre and Prisoner of War Holographic Theatre and Australia's World Peace Bell.









Career News with Mrs Morton



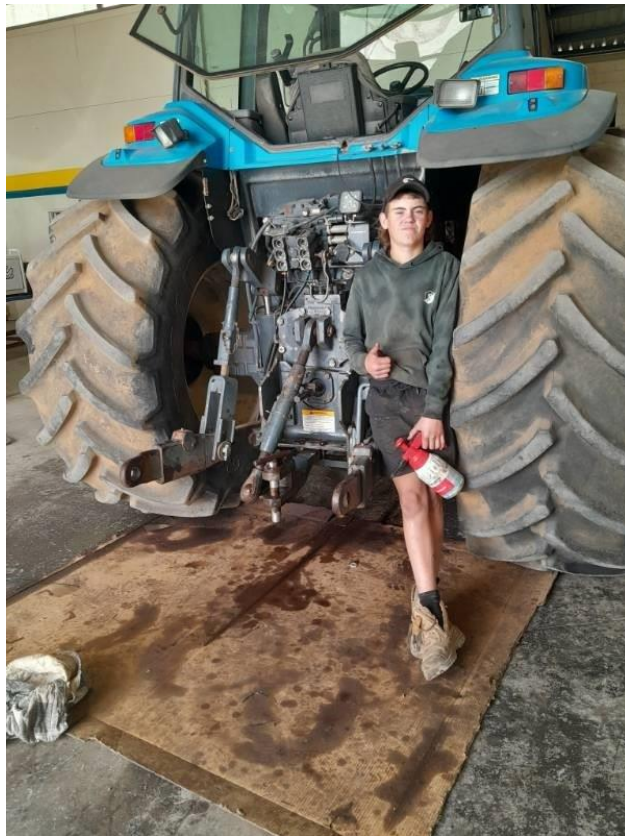
Tooleybuc Career News

Next week we have our Automotive students completing placements and I look forward to hearing about their learning and interactions with the workforce. Positive comments have come from the Automotive teacher who has been impressed with this years group of students. Paige and Brayden completed their Automotive Work Experience through SuniTAFE recently.

In **Week 5 the new Stage 6 group** are being given an opportunity to attend a **post school** options excursion with visits to Federation Uni Ballarat, Latrobe University Bendigo and Bendigo Tafe. Please return notes promptly.

As the year starts to come to a rapid close it is important for all **potential school leavers** to complete their **transition and career plan** and see me if possible.





APC&I with Miss Overall



It's hard to believe we are in October, the year is flying by and I'm sure this last term will too. Term 4 is always a busy one and this term will be no different. Next week we have our School Book Fair and in weeks six and eight, years 3-6 will be participating in Writer's Workshops.

This term we have two Book Clubs running, we are reading *Dragon Games* and *The Grandest Book Shop in the World*. Students have been very excited to start reading these texts and it's wonderful to see such enthusiasm towards reading.

Head Teacher Report with Miss Duma



Head Teacher Report Our Stage 6 2023 students have commenced their HSC exams, already completing English Standard Paper 1 & 2, Mathematics Standard 2 and Legal Studies. Our students still have Business Studies (24 October) and Community and Family Studies (31 October) to go. Year 7-10 students will have their Yearly Exams throughout Week 4, before we have the Secondary Rollover at the Beginning of Week 6 to commence the 2024 Academic year. A reminder to all students to ensure that all

outstanding assessment tasks are completed before the end of Week 4 to ensure a smooth transition for Week 6.

Community Notes



CANTEEN MENU- 2023 (updated 15-6-23)

HOT FOOD-

Pie	\$4.00
Sausage Roll	\$3.00
Ham and Cheese Toasties	\$3.00
Lasagne	\$4.00 available only until sold out
Mac and cheese	\$4.00 available only until sold out
Dim Sims	\$1.00
Tomato sauce	.20c

OTHER-

Honey Soy Chips	\$2.00
SPC Peaches fruit cup	\$1.20

DRINKS-

Breaka Flavoured milk (choc and Strawberry)	\$2.00
Flavoured water Raspberry or Black currant	\$2.00
Bottle of water	\$1.00

1 - Please note new price list.

We're coming to your community



**NSW Government services will be available
at our Mobile Service Centres in:
Tooleybuc on Tuesday 31st October 2023
10:00am –3:00pm**

This includes:

- Savings Finder, for more than 70 rebates and vouchers to help you save
- driver licences, proof of identity documents and photo card applications
- Driver Knowledge Tests
- birth, death and marriage certificates
- Working with Children Checks
- NDIS Worker Checks.

Call **13 77 88** or visit service.nsw.gov.au to check our latest timetable.

Severe weather may mean our timetable has to change at short notice, we strongly recommend you check on the day.

 **Find us at:**

Bridgekeepers Cottage
Murray Street



Support is here for you.

Anywhere, anytime.

Sometimes we don't think our own problems are 'serious' enough to get support. But support is here for everyone, even you.

You don't have to put up with feeling low, sad or worried when things seem like too much. Sharing how you're feeling can help.

You can chat anywhere, anytime with helplines that are free and confidential.

Scan for helplines



Find more support services at denimentialhealth.org.au



CONFIDENTIAL AND FREE HELPLINES AVAILABLE 24/7 (unless other hours are listed)

ACCESSLINE 1800 800 944
Professional help and advice in the Murrumbidgee LHD.

LIFELINE 13 11 14
Crisis support for anyone experiencing emotional distress.

KIDS HELPLINE 1800 55 1800
Phone counselling service for young people aged 5 to 25.

SUICIDE CALL BACK SERVICE 1300 659 467
Free telephone, video and online counselling.

MENSLINE 1300 78 99 78
Telephone and online counselling service support for men.

1800 RESPECT 1800 737 732
Support for people impacted by sexual assault, family violence and abuse.

BEYOND BLUE 1300 22 4636
Information and counselling support for anxiety, depression and suicide prevention.

FAMILY DRUG SUPPORT 1300 368 186
Support for families and carers in crisis due to alcohol and other drug use issues.

13 YARN 13 92 76
Aboriginal & Torres Strait Islander crisis support line.

OPEN ARMS 1800 011 046
Support for veterans and families.

QLIFE 1800 184 527
3PM TO MIDNIGHT - LGBTI peer support and referral for people wanting to talk about sexuality, identity, gender, bodies or relationships.

BUTTERFLY FOUNDATION 1800 33 4673
8AM TO MIDNIGHT - Counselling support for anyone concerned about eating disorders or body image issues.

PARENTLINE 1300 1300 52
M-F 8AM-9 PM WEEKENDS 4PM-9PM
Counsellors to help those caring for a baby, child or teenager.

PANDA 1300 726 306
MONDAY TO SATURDAY
Support throughout pregnancy and for new parents.



REGISTER NOW!

» **Competition each Friday!**

Free two-week trial

New Little Athletes can join for a two-week free trial before deciding whether to fully register.

Athletes of all skills

Little Athletics has a focus on improving personal bests and encouraging athletes to build personal athletic skills.

Opportunities galore

Competition each Friday night in Terms 4 and Term 1, plus optional local coaching and option to travel to district carnivals.

**THERE'S STILL
TIME TO
REGISTER!**

Register now for 2023/24 – as a full member or trial athlete.
Go to www.lavic.com.au.
Competition has started,
and runs Friday nights from 5pm.