



THE BRIDGE

STUDENT NEWS FROM TOOLEYBUC CENTRAL SCHOOL

3rd June Term 2 Week 6

INSIDE THIS ISSUE:

- **Principal's Thoughts**
(page 1)
- **Primary Bridge Report**
(page 3)
- **Secondary Bridge Report**
(page 5)
- **Community Library**
(page 8)
- **Voluntary Fees**
(page 9)
- **Uniform**
(page 9)
- **Canteen**
(page 10)
- **Infectious Diseases of Childhood**
(page 11)
- **Community Information**
(page 11)
- **Absent/Bus Note**
(page 17)
- **Calendar 2016**
(page 18)

Tooleybuc Central School,
Murray Street, Tooleybuc,
NSW 2736

Ph (03) 50305422
Fax (03) 50305408

Email:
tooleybuc-c.school@det.nsw.edu.au

Web:
www.tooleybuc-c.schools.nsw.edu.au/

Melanie's Thoughts



Melanie Wait
Principal

Uniform

As the weather gets colder it's important that our students have transitioned into their winter uniform.

All boys should be wearing grey pants and school jumper. In primary girls should be wearing green pants and secondary girls, black pants.

For extra warmth a green polar fleece or black or green jacket over the top a school jumper is acceptable.

All students are expected to wear black leather shoes (black leather sneakers are acceptable) at all time as part of their uniform. Sneakers are only to be worn as part of their sports uniform.

Don't forget there are a small number of items available for \$5.00 from our uniform pool.

Stage 6

Just a reminder that our Stage 6 students should be busy completing their HSC learning. Year 12 is a demanding time and it is important that students are putting in the required effort to ensure their success.

Consistent attendance, regular study and completion of class work are all requirements for students to achieve their personal best.

CAFÉ

Thank you to our Hospitality students who have been running our CAFE each Monday. This has been a great opportunity for our students to hone their service skills.

Welcome

Welcome to Ms Abbie McElevey who has begun teaching at our school. Miss Rutherford has taken on a new role in our school and Ms McElevey is now looking after our Library with Leanne and teaching our primary students Library. Ms McElevey also has a drama background and SRC are working with her to introduce a Drama Club.



SRC students organised a Reading Club for the younger students in the Library during lunch time.

Merit Scheme

To reward our students' positive behaviour Tooleybuc Central School runs a strong Merit Scheme. Students are awarded 'Merit Awards' during the school year and an accumulation of these merits equates to levels.



Bronze Level	10 Merits
Silver Level	Bronze plus and extra 20 Merits
Gold Level	Silver plus an extra 30 Merits.

Primary students are given a 'Lucky Dip' at the achievement of each level. Then they are presented with a certificate at our Whole School Assembly. Secondary students with the highest GEM score in each class receive the Student Of The Fortnight on Assembly. Those students who achieve Gold Level or the correct GEM average are invited to attend our End of Year Merit Excursion.

Silver Awards

Lucy	1	Hannah	3
Alesha	3	Tara	6
Emily	3	Emma	6

Bronze Awards

Name	Year	Name	Year
Aidan	F	Alexander	3
Angus	F	Alex	3
Anton	F	Ashby	3
Beau	F	Finn	3
Bol	F	Jayla	3
Felicity	F	Kayla	3
Jade	F	Montana	3
Lachlan	F	Murdoch	3
Mason	F	Nancy	3
Tayce	F	Aroha	4
Trinity	F	Keisha	4
Alister	1	Kusi	4
Alyssa	1	Jett	4
Billy	1	Rhys	4
Campbell	1	Asiri	5
Isabel	1	Emily	5
Jakson	1	Josie	5
Makenna	1	Lochlan	5
Riley	1	Malek	5
Rebekah	1	Summer	5
Sebastian	1	Will	5
Felicity	2	Amy	6
Imogen	2	Angela	6
Jordan	2	Dallas	6
Jude	2	Taylen	6
Myah	2		
Skye	2		

Head Lice

Time from infestation to eggs hatching

Usually 7 to 10 days.

Symptoms

Itchy scalp, white specks stuck near the base of the hairs; lice may be found on the scalp.

Do I need to keep my child home?

No, as long as head lice management is ongoing.

How can I prevent spread?

Family, friends and classroom contacts should be examined and treated if infested. Clothing and bedding should be washed in hot water.

For Sale

Older hens \$3.00 contact Mr McCarron at the School. Ph: 03 50305422



A Quick Bite ...

Fun games to play that won't cost the earth

Looking for quick, easy and low cost games for the kids to play on the weekend? Try these jumping and throwing games.

Make your mark: Hold a piece of chalk, jump from the ground and leave a chalk mark on the wall as high as you can.

Sack races: use old pillowcases or tie legs with another person. Jump as fast as you can along a grassed track.

Targets: Place empty plastic bottles out in a line, throw an object at them counting how many you knock over. Draw a chalk target on an outside wall, use a wet tennis ball and aim for a bullseye.

Clap, Clap, Clap: Throw the ball as hard as you can into the ground. Try to get as many claps as you can before the ball hits the ground again.

For more information visit

mihd.health.nsw.gov.au/keepinghealthy

Live Life Well
@ School



Health
Murrumbidgee
Local Health District



Up Coming Events Term 2 2016

Week 7

Timetable Week 1

Fri 10 Jun Back up Secondary Zone Athletics @ Deniliquin

Week 8

Mon 13 Jun Queen's Birthday – Public Holiday

Thu 16 Jun Riverina Primary Cross Country @ Gundagai

Fri 17 Jun Riverina Secondary Cross Country @ Gundagai

Primary News

David Tallon (Assistant Principal)

Soccer Clinics

This week saw some soccer coaches from Swan Hill visit our school to run some clinics for our primary students. Students had a great time playing soccer using skills such as trapping, passing and heading.



Year 5/6 learning to control their soccer balls.



Alex has his soccer ball in motion.



Billy moves his soccer ball between the markers.



Foundations students learn skills in keeping their soccer ball still.

GRIP Leadership

On the 24th May I had the opportunity to take the Year 6 students to Mildura for a leadership conference. We had an amazing time there. Students took part in activities and listened to some great speakers. Year 6 came away with some great ideas from the day. I need to thank Cassie Andrews for helping with transport.



Year 6 on the GRIP Leadership Excursion



Year 6 at the GRIP Leadership

Primary Assembly

Congratulations to our certificate winners. Thankyou Foundation for your wonderful performance.

Up and Coming events

June

Monday 13th - Public Holiday

Thursday 16th - Riverina PSSA Cross Country

Year 3/4

Karen Andrews (Class Teacher)

This term, the 3/4 class have been working on lots of things!

We have talked about being a good sport and how this looks on the field



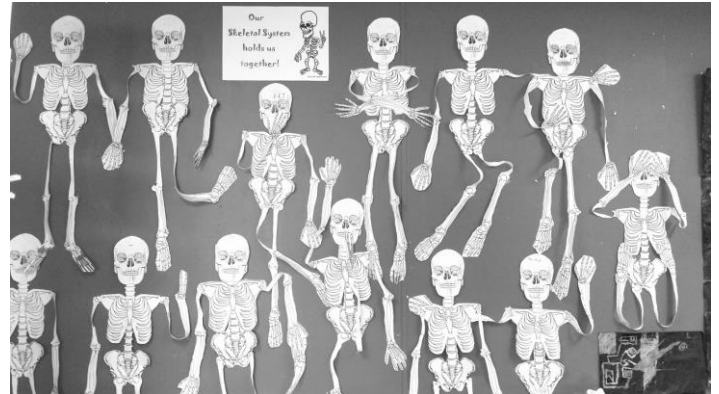
The students are busy tending to their bean plants in Science (they are growing at varying rates of success!)



We have also produced some pretty amazing art,



and learnt about the human skeleton!



We learned how plants grow in Science with Mr Nelson.



Secondary News

English

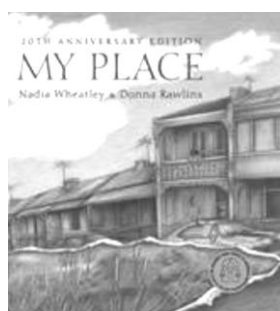
Christine Connellan (English Teacher)

Earlier in Term 2, the **Year 7 English** class were involved in a **Writing** unit. They honed their skills in stating an opinion, presenting an argument and writing a letter of complaint, a persuasive exposition and a persuasive discussion/debate. They also developed their creative writing skills through composing several narrative pieces. Currently, they are engaged in a film study based on **The Sandlot**, a heart-warming story about a group of pre-teen baseball fanatics, who find themselves faced with a dilemma, in which they discover the value of team work and problem solving. The students are currently creating an advertising poster which persuades others to view the movie. In the latter weeks of the term, Year 7 will study **Window**, by Jeannie Baker, a picture book which alludes to a number of issues related to sustainability. This study will conclude with the students creating their own picture books with a sustainability theme.

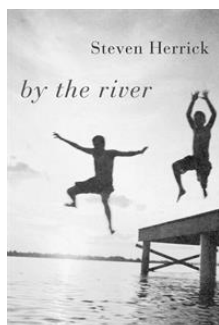


Year 8 English students have composed some very well structured, evidence-based essay responses to Katherine Paterson's novel, **Bridge to Terabithia**. In the latter half of the term, the Year 8 class has turned their attention to a study of **My Place**, by Nadia Wheatley and Donna Rawlins, a picture book about history, tradition, change and sustainability. It offers a retrospective focus on the successive inhabitants of

a house in inner city Sydney, beginning in 2008 and spanning back to 1798... and beyond to the families who lived in bark huts, in the same place, before those times. The students will then create a visual text which reflects their own time, place and heritage.



Year 9 & 10 English students began the term with an **Advanced Writing** unit. They sharpened their skills in persuasive writing techniques. This unit culminated in presenting a persuasive opinion on an essay topic centred on the novel, **Come Back to Show you I Could Fly**, by Robin Klein. They have now embarked on a study of Steven Herrick's, **By the**



River, a poignant anthology of poems, which chronicle the life of a teenage boy who lives in a rural, riverside community – not unlike Tooleybuc!

The **HSC English Studies** class has completed the mandatory module; **We are Australian**, a comprehensive study of the concept of Australian identity and values. Through engaging with a range of literary texts in both print and electronic forms, students have broadened their understanding of the relationship between personal identity, individual rights, community responsibilities and a sense of nationhood. Students have researched the diversity of cultures, people and perspectives that contribute to Australian communities and to the nation, as a whole. This process ensured students questioned their own beliefs, and exposure to stereotypes, and as a result were able to create a presentation on what it means to be Australian.



ALARM: A Learning and Responding Matrix Stage 6

ALARM: A Learning and Responding Matrix Stage 6					
TOPIC NAME: What is the <u>name</u> of the topic or unit of study?					
DEFINITION AND EXPLANATION: What is the topic, unit or subject (in one or two sentences)?					
I IDENTIFY	D DESCRIBE	E EXPLAIN	A ANALYSE	CRITICALLY ANALYSE	EVALUATE
<ul style="list-style-type: none"> name list recall recognise 	<ul style="list-style-type: none"> outline classify summarise define categorise 	<ul style="list-style-type: none"> explore elaborate demonstrate clarify 	<ul style="list-style-type: none"> assess investigate predict interpret apply 	<ul style="list-style-type: none"> compare contrast differentiate distinguish discuss 	<ul style="list-style-type: none"> substantiate document findings propose recommend
What is it?	What does it look like/feel like/sound like etc?	Why is it like this? What is its purpose? What role does it play?	How does it work? How does it create an effect? How does it produce an outcome? What impact or consequence does it have?	What positive and negative impacts does it have? What similarities and differences can be drawn? What are the arguments for and against?	Give your opinion. Make a judgment. To what extent is...? How effective is...? Discuss the usefulness of...
CRITICALLY EVALUATE: Assess your findings. Make a verdict and justify.					
CONCEPTUALISE TOPIC: Synthesise your understanding of the overall concept. Understand relationships, make links and connections.					
APPRECIATE TOPIC: Why is it important? How does it relate to life? How has my understanding been enhanced?					

Careers

Kim Morton (Careers Adviser)

Next Wednesday all secondary students have an opportunity to attend the **Murray Mallee Careers Expo** at the Flo Campus in Swan Hill. This is a wonderful opportunity for students to explore a diverse range of career options and develop links with local employers and services available to help young people transition from school to work or further study. In addition students will visit TAFE to discover the diverse opportunities available there. Can all students please return their notes ASAP. All travel has been subsidised through Career Expo funding gained. Students only need to bring money for lunch.

Work Placement for Year 11 students and Work Experience for Year 10 students.

Students undertaking Automotive and Hospitality will be completing their second week of Work Placement in Week 3 of next term (1st-5th August). Please start carefully thinking of where you would like to go and talk to your teachers about the suitability of these placements.

Work Experience Year 10 students need to discuss their options with Mrs Morton ASAP.

Talk by MMTC

Last week we were lucky enough to have Troy Rosser visit us and discuss what MMTC do and provide information on traineeships and apprenticeships. We thank him for his time and all students gained additional knowledge plus had further thoughts on their career pathways.



Troy Rosser talks to students about their future pathways.

REMINDERS:

- **INDIGENOUS STUDENT EXPERIENCE MONASH DAY** – 24 June; **Book:** Ph. 9905 8699, kristel.keleher@monash.edu. See www.monash.edu.au/study/life/indigenous.
- **EXPERIENCE RMIT** – for holiday programs see: www.rmit.edu.au/experiencedays
- **EXPERIENCE ACU** – Register at: www.acu.edu.au/uni-experience.
- **EXPERIENCE LA TROBE** – See: www.latrobe.edu.au/study for details and to book.
- **EXPLORE OCCUPATIONAL THERAPY** – 14th July @ Austin; **Apply:** to keely.zenner@austin.org.au
- **AVIATION FOR WOMEN CONFERENCE** – 4 June; **Book:** 9580 8822 or markd@mfs.com.au.

FIND OUT ABOUT NURSING DEGREES AT DEAKIN UNIVERSITY – Deakin nursing graduates are well regarded and well prepared for work. Find

out about **Deakin courses** at an **information session**:

- **Burwood Campus:** 6-8pm, Wed 20 July, Building BC, Burwood Corporate Centre, Level 2, OR 2.30-4.30pm, Sat 23 July, Building BC, The Point, Level 1;
- **Geelong Waterfront campus:** 6-8pm, Wed 20 July, OR 2.30-4.30pm, Sat 23 July, both Building AD, Western Beach Room 6.104;
- **Warrnambool campus:** 7.30pm, Fri 22 July, 165 Timor St

Book: Ph. 9244 3059; **See:** www.deakin.edu.au/nursing-midwifery.

MORE DEAKIN NEWS –

- ✚ **Faculty of Business and Law** – preparing to find a job will soon be part of the Commerce course, with a compulsory unit in **career planning** being piloted. This Personal Insight unit will provide career development experiences, and has a clear focus on co-creating a professional identity. Explore personal aspects of yourself to create a portfolio of career resources.
 - ✚ **New Website coming** – Scheduled for launch on 23 May, the site will be ground-breaking in the sector, combating problems commonly faced by **university websites**. See: www.deakin.edu.au.
 - ✚ **Elite Sports Precinct Developments** – The first stage of the new Elite Sports Precinct has opened at the Geelong Warrnambool campus providing **state-of-the-art facilities** for exercise and sport sciences and physical education teaching students, and student engagement/community sport.
 - ✚ **Kickstart your Course and Career Exploration at Deakin** – ‘**Explore**’ is a digital tool enabling you to search for **courses** and corresponding **career possibilities**, and vice versa. If you **don't know what to do** when you finish school and **want help with ideas**, give it a try!
 - View more than 1000 course and career pairings
 - Filter your search based on your interests
 - Save your favourites and share with friends
 - Enjoy short snippets of relevant information
- Visit explore.deakin.edu.au.

DESIGN EVENTS COMING AT SWINBURNE – Swinburne is offering a **Discover Design** student holiday program. It is a creative school holiday program for Year 10-12 students who would like to learn more about design careers, courses and pathways. Participants will develop a design portfolio, broaden their problem-solving and design-thinking skills and work in teams – just like in a real design studio. **When:** 5-8 July (registration 9am for a 9.30am start); **Where:** Level 3, Advanced Manufacturing

design Centre, Hawthorn campus; **Cost:** \$160; **Register:** [Register now](#).

EXPLORE THE MELBOURNE SCHOOL OF DESIGN – The **University of Melbourne's School of Design (MSD)**, located at the heart of the Parkville campus, and is designed as a **learning building**. Students learn not only in **classrooms** but also by **using** the building and **observing** ways others use it. The new building provides opportunities for '**living learning**' through **studio classes, exhibitions, tours, photo documentation and teaching** on and around the site. An app has been designed to enhance your experience of the building. Take a **self-guided tour**, see why some **key design decisions** were made, and **why the building is unique** - www.explore.msd.unimelb.edu.au/explore.

WHICH CAREER SUITS MY PERSONALITY? SEE: MY CAREER MATCH – There are many tools available for finding out which careers will best suit you. RMIT is offering 'My Career Match', an online tool where you can fill out a personality questionnaire and receive a **comprehensive career profile** detailing **traits and strengths** of your personality type, suitable **career paths**, and **relevant courses**. Check out RMIT's My Career Match profiles at: www.rmit.edu.au/programs/myprofile. Use the access code RMIT: 180 when accessing the tool.

LA TROBE UNIVERSITY NEWS –

The **Bachelor of Criminology** is being offered in 2017. Unlike some other criminology degrees, this particular degree will feature **forensics as a core component**. It will also include **Integrated Workplace Learning (IWL)** as a part of the course, giving students the opportunity to use their knowledge, and to assist with future employment.

ASPIRE, a well-received and recognised initiative for domestic undergraduate school leavers which has been operating for two years now, will continue into 2017 and beyond. The program recognises the **positive impact that a student has had on their local community**. Community engagement and objective school achievement forms a significant part of the assessment criteria of the program, not ATAR scores. Applications for 2017 entry open on shortly on 1 June and close on 31 August. See: www.latrobe.edu.au/aspire. NOTE: The program has special links with the CFA, the Duke of Edinburgh Award and St Johns Ambulance, however, students with many types of community engagement are considered.

WHERE MIGHT A SCIENCE DEGREE TAKE ME?

- **Are you fascinated by nature?** You can discover more about living things with **biology** and **environmental science** or even

biotechnology where you can learn about everything from farming to pharmacy products.

- Do you want to be at the **forefront of technology**? A career in **chemistry** allows you to test and produce anything from penicillin to polythene or if you'd like food for thought consider the potential of food science.
- Are you **curious about the universe**? **Physics** looks at the smallest sub-atomic particles and the forces of the universe but if you want to explore a new frontier of science, discover **nanotechnology**.
- Are you intrigued by the **potential of numbers**? **Mathematics** finds patterns and connections and can help to model systems and develop theories and formulas while **statistics** can allow you to predict trends by using data to make conclusions. If you fancy yourself as a **forecaster**, **analytics** can help you see preferences and anticipate actions.
- If **maps and modelling interest you**, this could lead you to a career in **surveying**. Alternatively, find out how location has an impact on the way we interact with world around us with **geospatial science**.

SUNSHINE ONLINE and SUNSHINE CLASSIC

On a Computer

1. Go to www.sunshineonline.com.au or <http://bookshelf.sunshineclassics.com.au/students/login>
2. Log in at the top of the homepage with your school's username and password.

On an iPad

1. Go to the App Store and search for 'Sunshine Online'
2. Install the free log-in App

Log in with your school's username and password.



Tooleybuc Central School

Strive to do well



Welcome one and all,

The Librarians at Tooleybuc Central School are inviting community members to join our library. Once joined you will receive a library card and be able to borrow any of the books in our collection.

The library will be open for your access during the following times:

Monday	Tuesday	Wednesday
8:30am – 9:00am	8:30am – 9:00am	8:30am – 9:00am
1:00pm – 1:30pm	1:00pm – 1:30pm	1:00pm – 1:30pm
3:15pm – 4:00pm	3:15pm – 4:00pm	

OR by arrangement with the Librarians.

If you would like to discuss anything please contact the Librarians at school.

Thank-you

Leanne Hoare & Leeta Rutherford

Tooleybuc Central School

Strive to do well



Community Member - Library Application Form

Title: Mr Mrs Miss Ms

Gender: M F

First Name:

Surname:

Address:

Postcode:

Phone:

Mobile:

Email:

Quality education from Kindergarten to Year 12 in a safe and caring environment

Principal: Melanie Wait

Murray Street Tooleybuc NSW 2736 T 03 5030 5422 F 03 5030 5408 E Tooleybuc-c.school@det.nsw.edu.au

VOLUNTARY CONTRIBUTIONS 2016

The New South Wales Government provides much of the necessary equipment and materials for the efficient running of the school. However, to keep up to date with the latest textbooks and to supply materials for such subjects as technics, craft and food technology, parents are asked to make a voluntary contribution. These are reviewed each year and kept to an absolute minimum, and are payable at the beginning of each school year.

These contributions are important in ensuring that we can optimize learning opportunities for students. Your cooperation in this regard is greatly appreciated.

Technology Fee	All Years F to 12	\$10.00
Current voluntary contributions including Technology Fee	Infants and Primary	\$52.00
	Years 7 + 8	\$98.00
	Years 9 + 10	\$57.00
	Years 11 + 12	\$57.00
Design and Technology Food:	Year 9 + 10 elective	\$65.00
Industrial Technology	Year 9 + 10	\$52.00 plus materials
Information & Software Technology	Year 9 + 10	\$52.00 plus materials
VET Hospitality	Stage 6	\$185 (\$25 Uniforms/ \$160 Pracs)
Industrial Technology	Stage 6	\$80.00

Wanted

Second hand uniforms in good condition. If your child has outgrown their uniform please consider donating it to the school.

LOST UNIFORMS

Please name your uniforms so we can return items that are misplaced.

School Bags

Tooleybuc Central School has school bags which are available to purchase from the front office.

Large \$58.00



Tooleybuc Central School Uniforms

TCS dark green bucket school hats \$15, are available for purchase from the front office

Tops

Primary:	Dark green polo shirt (TCS)
	Jumper (TCS)
	Girl's summer culottes/green check dress
Secondary:	Green/yellow polo shirt (TCS)
	Rugby Jumper (TCS)

Pants

Primary & Secondary Boys	Grey School Pants/ Grey Max Dax
Primary Girls	Green school pants/ Green Knee Length Shorts
Secondary Girls	Black school pants/ Green Knee Length Shorts

Sport

Primary & Secondary	Yellow polo shirt
	Green basketball shorts
	Green tracksuit pants
	Sneakers

Shoes

Primary & Secondary Boys & Girls	Black Leather Shoes
----------------------------------	---------------------

Stockists of School Uniform

Outdoors First

Garments will need to be ordered so they can be embroidered, however they are a very reasonable price and the turnaround is very quick.

Clark's Gift Salon

183 Campbell Street, Swan Hill – Phone 50321616

PSW

Bootleg Pants – Polyester 465 Bottle can be purchased online at <http://www.psw.com.au/>

Second Hand Uniforms

The school is in need of

- Secondary t-shirts and
- Girls green and black school pants

for our uniform pool.

STUDENT ASSISTANCE SCHEME APPLICATION FOR SUPPORT

If you would like an application for support please contact the school.

Canteen Menu 2016

Term 2

Lunch (all hot food must be ordered)

Pie	\$3.00
Sausage Roll	\$2.00
Party Pie	\$1.00
Mini Pizza (Ham & Pineapple or Ham & Cheese)	\$2.00
Dim Sims (soy sauce – no extra charge)	\$0.50
Chicken Nuggets	\$0.50
Tomato Sauce	\$0.20

Snacks (do not include in lunch order, students to purchase at lunch time)

Muffins (Double Choc)	\$1.60
Bulla Frozen Yogurt (Strawberry and Mango)	\$1.60
Chips (Honey Soy)	\$1.00
Raspberry Twists	\$0.20

Drinks

Big M (Chocolate, Strawberry & Iced Coffee)	\$2.00
Play water - 350ml (purple, lemonade, red, fruit tingle)	\$2.00
Prima (as drink or frozen) (apple/blackcurrant and tropical)	\$1.20

Lunch orders are to be written on a paper bag including students name and year (with money inside). Orders are then to be taken to front office by students or sent with the rolls.

Please remember to include only hot food and drinks on student's lunch orders. All snacks are to be purchased from the canteen at lunchtime.

Please note Raspberry Twists are now .20c each

CANTEEN ROSTER**Term 2**

10th June Kelli Edelsten & Cindy Funnell

Thank you to all volunteers who helped in the Canteen this year. More volunteers are always welcome.

If you are unable to do duty on your rostered day please contact someone else on the roster and arrange a swap.

Canteen duty is from
10:30 am until 2.30pm.

Hospice

We have a donation jar at the front office for the Swan Hill Hospice, if you have any small loose change it will go to a wonderful cause.

'000'

If you have an emergency and need to call an ambulance and live in the Tooleybuc area, when asked

'Police, Fire, Ambulance'

Respond,

'Bendigo Ambulance'

This will minimise confusion as to where the ambulance will originate from and ensure a quick response

**Stuck?**

**Need a hand with
Maths,
Science,
English,
Assignment Research or
Study Skills?**

Don't forget the Swan Hill Regional Library offers students in Years 4-12 & TAFE **Free Online Tutoring.** Expert tutors are online and waiting to help Monday through to Friday from 4pm – 8pm!

Connect from your library or from home at:
<http://www.swanhill.vic.gov.au/quicklinks/libraries>
See you online!

Questions?
Call the Swan Hill Regional Library on (03) 50 362480

Are you or someone you know experiencing

**DOMESTIC or FAMILY
VIOLENCE**

Local Support is Available

Call

5881 7411

And ask to speak to a
DV support worker

St Vincent de Paul Society NSW
Support Services

Infectious Diseases of Childhood

Children are at increased risk of some infectious diseases because they have not yet developed immunity to them, they tend to gather in groups, and they may have difficulty with some aspects of hygiene. Last updated: 10 April 2014

Chicken Pox

Time from exposure to illness	10 to 21 days, usually 14 to 16 days.
Symptoms	Slight fever, runny nose, and a rash that begins as raised pink spots that blister and scab.
Do I need to keep my child home?	Yes, for 5 days from the onset of the rash and the blisters have dried.
How can I help prevent spread?	Immunise your child at 18 months of age. Immunisation is recommended for children at 12 years if they are not immune.

Conjunctivitis

Time from exposure to illness	1-3 days.
Symptoms	The eye feels scratchy, is red and may water. Lids may stick together on waking.
Do I need to keep my child home?	Yes, while there is discharge from the eye.
How can I help prevent spread?	Careful hand washing; avoid sharing towels. Antibiotics may be needed.

Gastroenteritis

Time from exposure to illness	Depends on the cause: several hours to several days.
Symptoms	A combination of frequent loose or watery stools, vomiting, fever, stomach cramps, headaches.
Do I need to keep my child home?	Yes, at least for 24 hours after diarrhoea stops.
How can I help prevent spread?	Careful hand washing with soap and water after using the toilet or handling nappies and before touching food.

German Measles (Rubella)

Time from exposure to illness	14 to 21 days.
Symptoms	Often mild or no symptoms: mild fever, runny nose, swollen nodes, pink blotchy rash that lasts a short time. Can cause birth defects if pregnant women are infected.
Do I need to keep my child home?	Yes, for at least 4 days after the rash appears.
How can I help prevent spread?	Immunisation (MMR) at 12 months and 4 years of age.

Glandular Fever

Time from exposure to illness	4 to 6 weeks.
Symptoms	Fever, headache, sore throat, tiredness, swollen nodes.
Do I need to keep my child home?	No, unless sick.
How can I help prevent spread?	Careful hand washing, avoid sharing drinks, food and utensils, and kissing.

Hand Foot and Mouth Disease

Time from exposure to illness	3 to 5 days.
Symptoms	Mild illness, perhaps with a fever, blisters around the mouth, on the hands and feet, and perhaps the nappy area.
Do I need to keep my child home?	Yes, until the blisters have dried.
How can I help prevent spread?	Careful hand washing especially after wiping nose, using the toilet and changing nappies.

Hepatitis A

Time from exposure to illness	About 4 weeks (can range from 2 to 7 weeks).
Symptoms	Often none in small children; sudden fever, loss of appetite, nausea, vomiting, jaundice (yellowing of skin and eyes), dark urine, pale stools.
Do I need to keep my child home?	Yes, for 2 weeks after first symptoms or 1 week after onset of jaundice.
How can I help prevent spread?	Careful hand washing; those that have had close contact with an infected child may need to have an injection of immunoglobulin; immunisation is recommended for some people.

Impetigo (School Sores)

Time from exposure to illness	1 to 3 days.
Symptoms	Small red spots change into blisters that fill up with pus and become crusted; usually on the face, hands or scalp.
Do I need to keep my child home?	Yes, until antibiotic treatment starts. Sores should be covered with watertight dressings.
How can I help prevent spread?	Careful hand washing.



Tooleybuc Sporting Club Ltd.

Phone: 03 5030 5476

Open Daily from 11.00am till late

UPCOMING ENTERTAINMENT FOR 2016

July

Comedy for a Cause

10th July 2016

8.00pm

The Tour to Tooleybuc

Proceeds to Soldier On

\$10.00pp

September

River Round up

14th to 18th September 2016

Country music and hospitality at its best

November

Murray Muster

9th to 13th November 2016

A great weekend of Country Music



WEEKLY ACTIVITIES

- Mon:** Poker 7.30pm
- Tues:** Bingo 'eyes down' @ 7.30pm
- Wed:** Members Draw @ 7.30pm,
Raffles between 7pm & 9pm
Wed/Sun Snowball Draw (LTPS/15/03148)
Jackpots \$50.00 each Wednesday &
Sunday if not claimed
Line Dancing 7.30pm
- Thurs:** Bingo 'eyes down' @ 11.30am
- Fri:** Raffles @ 8.30pm (approx)
Members Friday Fortune Draw @
9.30pm (approx) Jackpots \$50 each
week if not claimed (LTPS/14/04455)
- Sun:** Raffle @ 8.00pm (approx)
Wed/Sun Snowball Draw (LTPS/15/03148)
Jackpots \$50.00 each Wednesday & Friday
if not claimed

CHEF'S SUGGESTIONS

Every Friday night the Bistro have a
Chef's Suggestions Specials Board.
It consists of around 4 different dishes at
affordable prices.
They are only available until stock runs out.
So come along on Friday Nights & enjoy a great
meal

Weekday Specials

Dine in Only

- Monday** Family Night Kids Meals 1/2 price
- Tuesday** Early Bird Roast 6.00 to 7.00pm \$12.00
- Wednesday** Parmy Night \$12.00
- Thursday** Steak Night \$15.00

Please check—Subject to change without notice

Media Release**Tooleybuc Local Health****Advisory Committee**Thursday 26th May 2016**TRANSPORT FOR HEALTH IN TOOLEYBUC AREA**

Tooleybuc Local Health Advisory Committee (LHAC) reminds the community about some changes to transport arrangements to medical appointments that may impact local residents.

Chair Yvonne Foley said the changes had occurred since the LHAC last issued a media release on the Isolated Patient Transport and Accommodation Assistance Scheme (IPTAAS).

"We all know that Tooleybuc is a community that is a bit isolated from transport, making it difficult to access a wide range of health services," Mrs Foley said.

"Most of us get to specialists in places like Mildura, Bendigo or Melbourne under our own steam; either driving ourselves or being driven by family or friends. Where this is not possible we often fall back on Community Transport; a volunteer based, Federally-funded program. And given the difficulty sometimes we just don't go."

IPTAAS is a subsidy scheme that allows people who drive, or are driven, to medical services over 100km away to claim some financial assistance. Where the referring GP states that an escort is needed and/or accommodation is needed at the destination an additional subsidy can be claimed to cover some of the cost.

Mrs Foley said the scheme applied to those with health care cards and those without.

"Non health care card holders need to make a \$30 co-payment. Health care card holders do not need to make a co-payment," he said.

"If you need to make frequent trips (say for radiology or dialysis) that are shorter than 100km you can also qualify for assistance if you travel over 200km a week. To do this you need to keep a diary. There is a form for this on the website.

"To qualify for the subsidy of 22c per kilometre your referral must be to the nearest provider of that type of service. That means if you are referred to Bendigo for, say, an endoscopy when this service can be provided in Swan Hill your claim may be rejected. So it makes sense to check that your referral is to the nearest service provider.

2/TRANSPORT FOR HEALTH IN TOOLEYBUC

"If you need to claim for accommodation for you and/or your escort there are a number of different rates. When staying in private accommodation (say

family) the rebate is \$20 per person per night. Staying in not for profit (say Ronald McDonald House) or for profit (the local motel) accommodation, the rebates start at \$43 per night and \$60 with escort. For longer stays in the last two there are some time based rebate increases.

"And the forms have been simplified and you can also apply on-line. There are two main new forms, a Doctor Referral Form (completed once for a new specialist) and a claim form with a number of parts. These forms are NOT pre-printed, they need to be accessed from the internet and printed when needed. If you don't have access to the internet you may need to ask your referring doctor, your specialist, the hospital or a friend to do this. Also you may be able to do this in the library for a small fee.

Further information can be found on the EnableNSW website at:

<http://www.enable.health.nsw.gov.au/iptaas>

or by contacting the Tooleybuc Community Health Service on 50305189.

Yvonne Foley

Chair

Tooleybuc LHAC

Phone: 50305317

Doctor is coming to Tooleybuc !

Doctor Slava Zotov

Is opening a

Medical clinic in Tooleybuc

And will commence

Mid June

9am- 12.30pm

At Unit 2/76 Cadell st

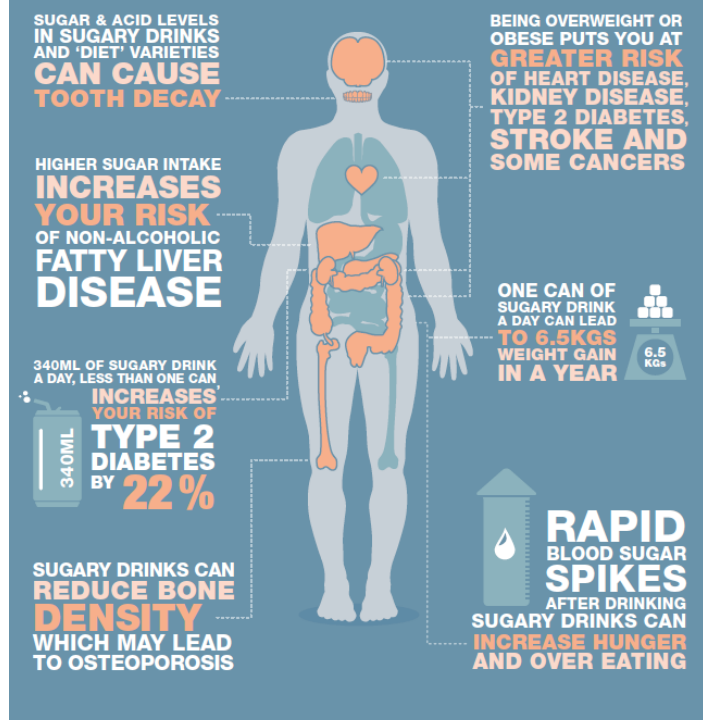
(HACC office, behind the Community Health
Centre)

Please support this fantastic service!

To make an appointment contact the Balranald

Medical Clinic on ph 50201055

WHAT ARE SUGARY DRINKS DOING TO YOUR BODY?



rethinksugarydrink.org.au



Pneumococcal vaccinations

Available

If you are 65yr and over you are entitled to have a free pneumococcal vaccination

This disease can lead to pneumonia, meningitis, septicaemia, all life threatening conditions.

While one dose is sufficient for the majority of the population there are some people who will require a 2nd dose, 5yrs after the 1st. for example those with:

- Chronic heart or lung or liver disease
- Diabetes, Down syndrome,
- Smokers, heavy drinkers and many more serious medical

conditions.

If you would like to receive your free vaccine and are 65yr & over

**Contact Tooleybuc Community Health
On ph-50305189**

FOR SALE

- 1 X Pine study 4 drawer desk with 3 shelf hutch (1155mm x 1730mm x 615mm) VGC \$400
- 1 X SB innerspring mattresses VGC \$100 each Phone Michelle on 0429967707



Census jobs – coming soon!

We need nearly 8,000 Field Officers in New South Wales to help make the 2016 Census a success. Applications open 2 May.

Census jobs are a great way to contribute to your community and get paid doing it. If you are tech-savvy, know your local community and are willing to travel and work independently, the Australian Bureau of Statistics wants to hear from you.

Field Officers:

- Will make contact with households and encourage online participation
- Will mostly work during August and September
- Will earn around \$21 per hour (includes 25% loading)
- Must be licensed to drive in Australia

These roles are casual, temporary positions with flexible working hours, and we encourage people from diverse backgrounds to apply.

To apply, visit abs.gov.au/careers from 2 May.

youth workshops

12-25yrs

Monday 27 June from 10am to 1pm

Drawing workshop for Youth (12 years and up) with Gunbower artist Jesse Munzel

Come along and learn how to use watercolour paint and biro pen, through this enjoyable, interactive highly entertaining, arts workshop. We will also learn how to draw using a photo as a reference point and develop skills with shade and colour.
Cost \$15 including lunch.

Saturday 2 & Sunday 3 July

Jacqui Stockdale returns to Swan Hill for four very groovy youth focused workshops. Artworks will be included in a special exhibition at the gallery in December.

Saturday & Sunday, 10.00 - 12.30 - 'Out me up - Fold me Out'

Learn to make amazing collage characters with just paper, scissors and glue. These will be added to a long folded out book which will form part of the December exhibition

Saturday & Sunday, 1.30 - 4.00 - 'On the Wire'

A workshop in making wild, wonderful and surreal collage characters with paper scissor and glue and wire. You will learn how to turn your collages into 3D sculptures.

\$10 per session

Saturday July 9 from 10am to 4pm

In this one day screen printing workshop Jake Holmes from Tooth and Nail Studio, will be showing you the basics of stencil screen printing. You will be shown a variety of techniques and then experiment to create your own series of prints.
Cost \$45 (\$40 members)

**Bookings essential!
Call the Gallery
on 5036 2430**



Horseshoe Bend, Swan Hill, VIC 3585. 03 5036 2430
art@swanhill.vic.gov.au gallery.swanhill.vic.gov.au
Open: Tues - Fri 10am - 5pm, Sat - Sun 10am - 4pm



CREATIVE VICTORIA

SWAN HILL REGIONAL ART GALLERY

Budweld Nursery*Glenn & Julie Fulton*

Specialising in
Mop Tops – Lily Pillys – Roses
Citrus and more
67 Hobson Road, Nyah 3594
Budweld5@bigpond.com.au
www.budweldnursery.com.au
Direct Sales by appointment only
0409 967 086

Every Friday Goodnight Express



This vital service is available to any community member wishing to access services in Swan Hill

Departing Goodnight: 9.30 Post Office
Departing Tooleybuc: 9.45 Post Office
Departing Koraleigh: 10.00 Post Office
Departing Nyah: 10.10 Post Office
Burtens General Store

Drop off point: 10.50 Clock Tower
Bus Stop

Swan Hill
Departs Swan Hill 1.30pm Woolworths
Car Park (Campbell St side)

Cost for a **RETURN** ticket: Adults \$8.00
Children (u 16) \$5.00

First time passengers will be required to complete a registration form
Please phone Michelle at HAC Tooleybuc on 5030 5252 for more information
An initiative of Wakool Shire HACC Services, funded by N.S.W. Ministry of Transport
15th January 2014

CRAIG DOMAILLE PLUMBING

For Honest Reliable Service call
Craig on 50305382
50305594 Fax

NOW AVAILABLE
1.8 Tonne Mini Excavator
Septic Tank Cleaning/Installation
Hot & Cold Water Installation
Gas Works
Roofing
Gas & Wood Heater Installation
Ducted Air Conditioner
Services/Installation
Agent for Lowara Pumps

Free no obligation quotes
Plumbing since 1985

Remedial Massage

& Manipulation
Reflexology Reiki Master
Jenny Arblaster
Wood Wood Vic
Ph: 03 50305126 0428 305126

**TOOLEYBUC COMMUNITY
HEALTH CENTRE**

Open

Mon - Wed 9.00am-4.00pm
Thur 9:00 am – 3:00 pm
Fri 9:00 am – 12:00 pm

Phone: 03 50305189**CLINIC HOURS ARE:**

9.00-10.00am & 1.00-3.30pm

All Clinics are free**EARLY CHILDHOOD CLINIC:**

Mondays-Wednesdays -1.00-3.30pm

IMMUNISATIONS CLINIC:

(appointment necessary) Third Tue in month
Tuesday 21st June

Diabetes Nurse- available by
appointment only

MENTAL HEALTH: Monthly by
Appointment

Visiting once per month or contact
ACCESSLINE (1800 800 944)

DIETITIAN CLINIC:

4th Tuesday of each Month
Appointments avail Tues 28th June
(ph 5033 9390 for apt)

Podiatrist

(ph 50339390 for an apt).
3rd Thursday of each Month. Thurs 16th June

Speech Pathologist

(1st Thursday of the month)
Telephone Swan Hill District Health
for appointments and enquires **5033 9390**

In an emergency contact your G.P.
Manangatang- 50351215
Balranald- 50201055
Nyah West- 50302456
Swan Hill- 50331711 Or call '000'

**LEN MCPHERSON**

REGISTERED ELECTRICAL CONTRACTOR
Vic. R.E.C 2553 NSW 144714C

122 Monash Ave
NYAH WEST 3595
A.H. (03) 5030 2725

EMAIL phantastic2000@hotmail.com**MOBILE: 0418 582 855**

Box 209, Nyah West, 3595

NYAH DISTRICT GOLF CLUB
Golf Club House can be hired for
MEETINGS PARTIES
WEDDINGS etc
Inquiries Phone 50302087

LUCKY PHIL'S
The One Stop Shop
Budget Rite & Take-Away Food Store
OPEN 7 DAYS A WEEK 6.30am - 7:00pm
Large Range of Groceries,
Take-away Foods,
Pizzas, Rotisserie Chickens,
Fruit & Vegetables, Eftpos Available
Murray St, Tooleybuc • (03) 5030 5090





"Old Tooleybuc
Doll Cottage"
Open 10 am daily
53 Cadell St
Tooleybuc

A delightful display of over 400
beautiful dolls that is sure to put a
smile on your face.

FEE.

A gold coin donation,
Proceeds donated to the local school for
gardens and outdoor furniture.

**Tooleybuc and District
Carpet Cleaning Service**

For domestic and commercial
steam cleaning at competitive rates.



Ring David Thompson on
0447 000348
for a free, no-obligation quote.

WANTED

The Wakool Shire Home and Community
Care (HACC)
are in need of volunteer drivers in the
Tooleybuc, Goodnight and Koraleigh
areas.

Men or Women. Young or Old!

Tooleybuc HACC Outreach Coordinator
50 305 252

"Helping others to keep small communities
strong."

SHEDS

Industrial, rural & domestic

Agents for Tru-Built &

McDonald Steel

Real Sheds – Real Steel

Matthew Loats Builder P/L
Phone: 0427 240 376 Fax:
(03) 50 305 122

Student Absences Note

Name: _____
 Class: _____
 Teacher: _____

This student was absent from _____
 / / to _____
 / /
 due to the following:

- ☐ Illness
☐ Injury
☐ Medical/Dental Appointment
☐ Family Commitments
☐ Other give reason

Additional comments: _____

Signed: _____
 Date: _____

**Tooleybuc Central School
Bus Variation to Routine**

child/children _____

_____ will not be
travelling on the

bus on _____
 (Date)

- ☐ I will be collecting them
☐ They will be travelling on
 _____ bus.
☐ Other (Please explain)

Note: Some buses do not allow other students to travel on their buses. Please contact the bus driver to ensure approval.

**Parent
Signature:** _____

Date: _____

**STUDENT ASSISTANCE SCHEME
APPLICATION FOR SUPPORT****Personal Details**

Student's Name: _____ Class/Year: _____

Home Address: _____

Parent/Guardian Name: _____

Family Support Reason Support is Needed

Support Details Assistance can be provided with uniform/books/excursions

Details of Request:

Amount

The information provided will be treated in confidence. Please forward this application to the Principal. There is a limit to the amount each child can access.

Signature of parent/guardian: _____ Date: _____

Approved/Principal Signature: _____ Date: _____

CALENDAR 2016

WEEK 7 JUNE TERM 2	6 CAFÉ	7	8 Careers Expo Years 7 to 10 and interested Yr 11/12	9 Scripture	10 Backup Secondary Zone Athletics @Deni
WEEK 8 JUNE TERM 2	13 Queen's Birthday - Public Holiday	14	15 CHS Netball @ Wagga	16 RIVERINA PRIMARY X- COUNTRY	17 RIVERINA SECONDARY X- COUNTRY
WEEK 9 JUNE TERM 2	20 Culinary Challenge Darren Pierra	21	22	23 Scripture	24 Red Nose Day (Clown Day)
WEEK 10 JUNE TERM 2	27	28	29 FORMAL Please note change of date	30	1 End of Term 2 for school (Eastern and Western division) Whole School Assembly 1:45 pm Reports Out to students
JULY	4 Winter Holidays	5 Winter Holidays	6 Winter Holidays	7 Winter Holidays	8 Winter Holidays
JULY	11 Winter Holidays	12 Winter Holidays	13 Winter Holidays	14 Winter Holidays	15 Winter Holidays
WEEK 1 JULY TERM 3	18 <u>Start of Term 3 for school (Eastern and Western division)</u> <u>School Development Day</u>	19 <u>Start of Term 3 for students (Eastern and Western division)</u>	20	21 Scripture	22 NSW PSSA & CHS X- COUNTRY Eastern Creek Mock Interviews PJ Day