



THE BRIDGE

STUDENT NEWS FROM TOOLEYBUC CENTRAL SCHOOL

6th May Term 2 Week 2

INSIDE THIS ISSUE:

- **Principal's Thoughts**
(page 1)
- **Primary Bridge Report**
(page 3)
- **Secondary Bridge Report**
(page 4)
- **Community Library**
(page 7)
- **Voluntary Fees**
(page 8)
- **Uniform**
(page 8)
- **Canteen**
(page 9)
- **Community Information**
(page 10)
- **Absent/Bus Note**
(page 13)
- **Calendar 2016**
(page 14)

Tooleybuc Central School,
Murray Street, Tooleybuc,
NSW 2736

Ph (03) 50305422
Fax (03) 50305408

Email:
[tooleybuc-
c.school@det.nsw.edu.au](mailto:tooleybuc-c.school@det.nsw.edu.au)

Web:
[www.tooleybuc-
c.schools.nsw.edu.au/](http://www.tooleybuc-c.schools.nsw.edu.au/)

Melanie's Thoughts



Melanie Wait
Principal

Anzac Ceremony

On Anzac Day I had the privilege of representing our school with the Captains at the Kyalite Dawn Service and Piangil Service.

Our Captains represented our school proudly and spoke extremely well at both of these services.

Parent/Teacher and Interim Reports

At the end of last term students from Foundation to Year 10 received an Interim Report. These reports provide a brief overview of each student's academic and behavioural progress. This combined with Parent/Teacher

Interviews will provide an accurate understanding of your child's progress.

Student Wellbeing

To support students across the school we have a number of teachers in specific roles. Our Learning and Support Teacher is Louisa Frost, Mrs Frost's role in the school is to support students with learning. Our Secondary Year Adviser is Mr Ben Miller, Mr Miller's role is to support our secondary students with any concerns they may have with their learning, social or behavioural issues. Our Girls Adviser is Mrs Chris Connellan. Mrs Connellan's specific role is to the girls in our school.

Don't forget we also have Mr Connell as our secondary Head Teacher, Teaching and Learning and Mr Tallon, our Assistant Principal who are always willing to lend a hand.



School Captains Callum and Jaide at the ANZAC Dawn Service at Kyalite

Merit Scheme

To reward our students' positive behaviour Tooleybuc Central School runs a strong Merit Scheme. Students are awarded 'Merit Awards' during the school year and an accumulation of these merits equates to levels.



Bronze Level 10 Merits
Silver Level Bronze plus and extra 20 Merits
Gold Level Silver plus an extra 30 Merits.

Primary students are given a 'Lucky Dip' at the achievement of each level. Then they are presented with a certificate at our Whole School Assembly. Secondary students with the highest GEM score in each class receive the Student Of The Fortnight on Assembly. Those students who achieve Gold Level or the correct GEM average are invited to attend our End of Year Merit Excursion.

Name	Year	Name	Year
Aidan	F	Alex	3
Angus	F	Ashby	3
Anton	F	Finn	3
Beau	F	Hannah	3
Bol	F	Jayla	3
Felicity	F	Kayla	3
Jade	F	Montana	3
Lachlan	F	Murdoch	3
Mason	F	Nancy	3
Tayce	F	Aroha	4
Trinity	F	Keisha	4
Alister	1	Kusi	4
Alyssa	1	Jett	4
Billy	1	Asiri	5
Campbell	1	Emily	5
Isabel	1	Josie	5
Lucy	1	Lochlan	5
Makenna	1	Summer	5
Rebekah	1	Will	5
Felicity	2	Amy	6
Jordan	2	Angela	6
Myah	2	Dallas	6
Skye	2	Emma	6
Alesha	3	Tara	6
Alexander	3	Taylen	6

For Sale

Older hens \$3.00 contact Mr McCarron at the School.
Ph: 03 50305422



SUNSHINE ONLINE and SUNSHINE CLASSIC

On a Computer

1. Go to www.sunshineonline.com.au or <http://bookshelf.sunshineclassics.com.au/students/login>
2. Log in at the top of the homepage with your school's username and password.

On an iPad

1. Go to the App Store and search for 'Sunshine Online'
2. Install the free log-in App

Log in with your school's username and password.

USER NAME: tooleybuc
PASSWORD: tooleybuc




Schools

Sunshine Online – An Essential Digital Literacy Program



Over 560 levelled e-books and 1000 interactive activities and games that focus on phonics, comprehension, fluency, spelling and writing.



Maths stories and activities to help children learn essential early maths concepts and skills.

Up Coming Events Term 2 2016

Week 3

Timetable Week 1

Tue 9 May Breakfast Club
NAPLAN
Open B/G AFL @ Hay
Accountancy Week

Wed 10 May Breakfast Club
NAPLAN
Accountancy Week

Thur 12 May Breakfast Club
NAPLAN
Accountancy Week

Fri 13 May Accountancy Week

Week 4

Timetable Week 2

Tue 17 May Year 7 Immunisations
U15 B/G AFL @ Deni

Wed 18 May Tracky Dack Day (Casual Dress)

Thu 19 May Hippo Hippo Years K – 2 @ Swan Hill

Fri 20 May PSSA XCountry @ Wakool/Burraboi Public School

Primary News

David Tallon (Assistant Principal)

Welcome back for Term 2. It has been great seeing our students come back telling stories of their holiday adventures.

Netball

Congratulations to Saoirse, Taylen, Amy, Emma, Summer, Tara and Emily who went to Griffith for the Netball trials last Friday. They learnt new skills and had a lot of fun at this event.

Up and Coming events

May

- Tuesday 12th - NAPLAN
- Wednesday 13th - NAPLAN
- Thursday 14th - NAPLAN
- Wednesday 18th - Tracky Dak Day
- Thursday 19th - Soccer coaching for Primary School
- Foundation, Year 1 and Year 2
- Excursion to Swan Hill
- Friday 20th - PSSA Cross Country
- Tuesday 24th - Year 6 leadership conference.

Foundation

Andrea Hazlett & Leeta Rutherford (Class Teachers)

Numeracy

At the start of every Maths session we have been counting the days we have been at school by placing fish on a fish bowl. This week we will be reaching the half way mark (50 days) so we will be having a mini celebration involving exploring all halves.

Other topics we continue to focus on are adding and subtracting, counting forwards and backwards using the numbers 0 to 10 and shortly this will be expanded to the numbers 0 to 20, position, patterns and measurement.

Home Ideas

It would be fantastic if at home the students could practise their counting skills for groups of everyday objects, counting out aloud forwards and backwards and state the position of items.

Monster Theme

As part of Foundation's 'Monster Theme' students had the opportunity to think – pair – share their ideas for creating unique monster character, they discussed ideas for creating teeth, arms, legs and eyes.

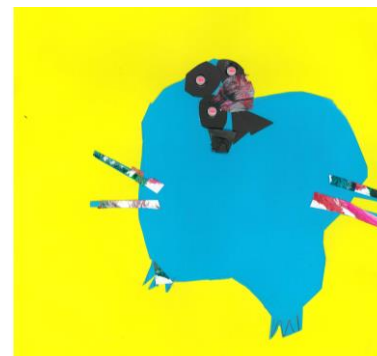
Students then described their monsters in a few sentences. Descriptive words are our focus this week and the Foundation students did very well at composing 'descriptions' of their monsters.

My monster is purple with five eyes, eith teeth, one arm, a tail and six pointy toes. By Felicity



My monster has big pinchers and it is big and red. It has arm joints and a big tail. By Lachlan.

My monster has four arms and three eyes. He is a round squiggly shape. He is blue and scary. By Tayce



My monster is a dancing monster. He likes to dance on a stage. He has a long blue neck and yellow feet. By Mason.

My monster has eight legs and four sharp teeth his arms are very strong. By Anton.



Secondary News

Sean Connell (Head Teacher)

What a busy week for being the second week of term! Firstly a big thank you all the parents who came to the Parent teacher interviews on Wednesday afternoon. With Mid-Year Examinations fast approaching, understanding a child's application and direction in class will aid in assisting their studies and homework at home which is fundamental to their ability to grasp the topics being covered.

Students in Stage 6 have now commenced this years Higher School Certificate subjects and the workload and teacher expectations have increased correspondingly. Any student who is struggling with the increased workload is encouraged to see myself or the Year Advisor (Ben Miller) to provide strategies and assistance in surviving this hectic time.

Good luck to all students competing in the school athletics carnival on Friday. As an avid Murray supporter I hope they can continue to build on the success of the swimming carnival last term.

As a friendly reminder, as the weather continues to get colder, heading into winter, students are expected to wear the school jumper or green polar fleece as their outer garment, these can be purchased through the Front Office if necessary. Any jackets worn over the uniform need to be black or green in colour.

paying off some money as before we know it the excursion will be here. If you have any issues with payment, come and see us so that we know what is happening. Payment needs to be finalised by the end of the term for both excursions.

Stage 6 PDHPE:

Students are investigating the health of Australian citizens and what health concerns we are facing as a country. They have looked at epidemiological statistics and the Australian Health Report.

Stage 4 & 5 PE:

Students are currently playing softball and lacrosse in PE. While these are played in class, students will be given the opportunity to use the new volleyball equipment for school sport that was funded through the Sport Schools Program.

Careers

Kim Morton (Careers Adviser)

Work Experience:

Next week three of our Year 10 students were successful in gaining work experience with the accountancy and Swan Hill City Council Work Experience Programs. We wish Laura and Ethan all the best with the four days they will do in Accountancy and Briony all the best for her five days in Aged care with the Swan Hill City council. We look forward to hearing of their experiences on their return to school. All of these students have undertaken the mandatory requirements (including Workplace health and safety certificates) prior to completing their week.

The rest of Year 10 students shall be undertaking Work Experience in **Week 3 of Term 3** (1st - 5th August). All students have been given a note outlining the process involved and the dates. Please contact the school if you have not received this note.

Career excursions:

We have been successful in obtaining a grant to run several career excursions this year. More details shall follow on these excursions which will help assist students in their career planning for the future.

Senior students:

All Year 12 and some Year 11 students have now had a one on one session with myself to discuss future planning and transition from school. It is important that all senior students regularly update their resume and review their options including seeking help. I am available Monday – Wednesday to assist any student and we have a wonderfully resourced Careers Room. **Another reminder is to read this newsletter!!**

ALARM: A Learning and Responding Matrix Stage 6

TOPIC NAME: What is the name of the topic or unit of study?					
DEFINITION AND EXPLANATION: What is the topic, unit or subject (in one or two sentences)?					
I IDENTIFY	D DESCRIBE	E EXPLAIN	A ANALYSE	CRITICALLY ANALYSE	E EVALUATE
<ul style="list-style-type: none"> name list recall recognise 	<ul style="list-style-type: none"> outline classify summarise define categorise 	<ul style="list-style-type: none"> explore elaborate demonstrate clarify 	<ul style="list-style-type: none"> examine investigate predict infer apply 	<ul style="list-style-type: none"> compare contrast differentiate distinguish discuss 	<ul style="list-style-type: none"> substantiate document findings propose recommend
What is it?	What does it look like/feel like/sound like etc?	Why is it like this? What is its purpose? What role does it play?	How does it work? How does it create an effect? How does it produce an outcome? What impact or consequence does it have?	What positive and negative impacts does it have? What similarities and differences can be drawn? What are the arguments for and against?	Give your opinion. Make a judgment. To what extent is...? How effective is...? Discuss the usefulness of...?
CRITICALLY EVALUATE: Assess your findings. Make a verdict and justify.					
CONCEPTUALISE TOPIC: Synthesise your understanding of the overall concept. Understand relationships, make links and connections.					
APPRECIATE TOPIC: Why is it important? How does it relate to life? How has my understanding been enhanced?					

PDHPE

Ben Miller (PDHPE Teacher)

In PE and sport students have another action packed term with CHS cricket being played soon against Barham, the School Athletics Carnival which will be soon followed by the Zone Cross Country and Zone Athletics for both primary and secondary.

Major excursions:

Both Stage 4 and 5 have major excursions in Term 3 this year. This is just a friendly reminder to continue

Reminders:

- **Undergraduate Medicine and Health Sciences Admission Test (UMAT) – Register** by: 3 June; **Test date:** 27 July (required by undergraduate Medicine at Monash University)
- **'FOCUS ON MELBOURNE'** – seminars - **Engineering** Tues 17 May (6.30-8.00pm); **Veterinary Science** Wed 18 May; **Information/register:** <http://futurestudents.unimelb.edu.au/focus2016>.

WHY RESEARCH CAREERS? Researching ideas for careers and training while at school is becoming **increasingly important**. With **automation of many jobs** developing rapidly, many unskilled jobs (and some skilled jobs as well) are rapidly disappearing. A willingness to **obtain qualifications** and to **re-train** when necessary will be **VITAL** for a young person's future. It is believed that **at least Certificate III level qualifications** (preferably higher) will be essential to obtain on-going work (ie Certificate IV, Diplomas, Advanced Diplomas and Degrees).

Resilience, determination, and education will be essential to remain employed.

Remember too, the importance of **Science, Technology, Engineering and Maths (STEM) careers**. These are some of the areas offering **growth and opportunity** in employment. Research shows that **75% of the fastest-growing occupations now require STEM skills**, so we must build a workforce of tech-savvy future employees. Digital literacy is vital for everyone. The digital revolution has led to many new jobs and new ones will develop that we have never begun to think of.

An **excellent website** to check out is www.joboutlook.gov.au. Here you will find details of what **jobs involve**, **average salaries**, and, perhaps more importantly, the **likelihood of employment growth** in that job.

'INSIDE MONASH' SEMINARS CONTINUE – If you would like to explore course s and careers at Monash University, then book into the **'Inside Monash'** Seminar series as it continues into May with the following sessions:

- 3 May – **Teaching**
- 4 May – **Music**
- 5 May – **Information Technology**
- 10 May – **Teaching**
- 11 May – **Medicine and Biomedical science**
- 12 May – **Engineering**
- 17 May – **Science Advanced**
- 18 May – **Law**
- 19 May – **Health Sciences**

- 25 May – **Biomedical science, Radiography, and Nutrition and Dietetics**.

Information and Bookings:

www.monash.edu/inside-monash.

'FOCUS ON MELBOURNE' SEMINAR DATES –

These seminars provide a great opportunity for you to check out University of Melbourne courses and careers. The series continues with:

- 19 May – Focus on **Biomedicine**
- 24 May – Focus on **Agriculture**
- 25 May – Focus on **Information Technology**
- 31 May – Focus on **Science**

More seminars in June. Registration/Information:

<http://futurestudents.unimelb.edu.au/focus2016>

INDIGENOUS ENGINEERING WINTER SCHOOL –

Do you like to solve problems, like working with your hands and fixing things, and are interested in making the world a better place? If yes, then engineering might be the career for you.

Melbourne, Swinburne, RMIT and Monash Universities are collaborating to bring the 2016 **Victorian Indigenous Engineering Winter School (VIEWS)**. This is a 5-day program where students will experience first-hand the **work of engineers**, meet **Indigenous engineering professionals**, discover **pathways to engineering**, explore four **university campuses** and hopefully open up a **world of possibilities** in engineering. **Who:** Year 11 and 12 students; **When:** Mon 4 - Sat 9 July (applications close 9 May); **Cost:** No charge; **Info:** <http://www.eng.unimelb.edu.au/engage/indigenous/vIEWS>; **Info:** eng-views@unimelb.au.

INDIGENOUS STUDENT EXPERIENCE MONASH

DAY – Want to get a taste of university life? The Indigenous Student Experience Day is a chance for secondary students to get a hands on experience of what Monash has to offer. There will be **interactive sessions** where participants will be able to **select areas of study** they are interested in. Meet **staff and students** in all study areas, find out about **how to apply for university** and what **support** is available for Indigenous students. **When:** 10am – 2pm, Fri 24 June (lunch included); **Where:** Robert Blackwood Hall, Clayton campus; **Book:** kristel.keleher@monash.edu, Ph 9905 8699. See www.monash.edu.au/study/life/indigenous. A free event sponsored by Yulendj – Indigenous Engagement.

SO YOU WANT TO BE A GRAPHIC DESIGNER –

Graphic Designers make **visual communications for reproduction in print and electronic media** (newspapers, books, magazines and websites). They also **develop images for corporate use and advertising**.

Qualifications can be gained from **VET (TAFE)** providers and at university. Many TAFEs offer **Diplomas** in Graphic Design (eg RMIT, Box Hill, Swinburne, Vic Uni) as do private providers like the Academy of Design Australia and Tractor Design. **University** Graphic Design courses are often called **Bachelor of Communication Design**. These are offered at Monash, RMIT and Swinburne universities. At Deakin, the course is called the **Bachelor of Creative Arts (Visual Communication Design)**.

FOR SALE

- 1 X Pine study 4 drawer desk with 3 shelf hutch (1155mm x 1730mm x 615mm) VGC \$400
- 1 X SB innerspring mattresses VGC \$100 each Phone Michelle on 0429967707



Sunraysia INSTITUTE
of Technical and Further Education

SuniTAFE Swan Hill campus.
Since our new area has just opened, we decided to hold a Scholastic Book Fair from May 9th until the 13th from 8.30 am to 4.30pm.

A Quick Bite ...

Make your food budget stretch further

Try these top tips:

- Write a list. You'll be more likely to only buy essentials this way.
- Limit 'extra' foods like chips, chocolates, lollies and soft drinks. These foods are poor value for money.
- Try to stick to unpackaged foods – packaged foods are much more expensive.
- Buy fruit and vegetables in season; they are cheapest and freshest.
- Consider buying a whole box or bag of fruit or vegetables and split between 2-3 households.
- Buy staples like bread and meat in bulk. They're cheaper and can be frozen.
- Shop at night. Supermarkets tend to reduce the prices of many perishable foods at this time. If you are not sure what time they reduce their prices, ask.



Image: freddie baillie/istockphoto.com

For more information visit

mihd.health.nsw.gov.au/keepinghealthy

Live Life Well
@ School

NSW
Health
Murrumbidgee
Local Health District



Census jobs – coming soon!

We need nearly 8,000 Field Officers in New South Wales to help make the 2016 Census a success. Applications open 2 May.

Census jobs are a great way to contribute to your community and get paid doing it. If you are tech-savvy, know your local community and are willing to travel and work independently, the Australian Bureau of Statistics wants to hear from you.

Field Officers:

- Will make contact with households and encourage online participation
- Will mostly work during August and September
- Will earn around \$21 per hour (includes 25% loading)
- Must be licensed to drive in Australia

These roles are casual, temporary positions with flexible working hours, and we encourage people from diverse backgrounds to apply.

To apply, visit abs.gov.au/careers from 2 May.

Tooleybuc Central School

Strive to do well



Welcome one and all,

The Librarians at Tooleybuc Central School are inviting community members to join our library. Once joined you will receive a library card and be able to borrow any of the books in our collection.

The library will be open for your access during the following times:

Monday	Tuesday	Wednesday
8:30am – 9:00am	8:30am – 9:00am	8:30am – 9:00am
1:00pm – 1:30pm	1:00pm – 1:30pm	1:00pm – 1:30pm
3:15pm – 4:00pm	3:15pm – 4:00pm	

OR by arrangement with the Librarians.

If you would like to discuss anything please contact the Librarians at school.

Thank-you

Leanne Hoare & Leeta Rutherford

Tooleybuc Central School

Strive to do well



Community Member - Library Application Form

Title: Mr Mrs Miss Ms

Gender: M F

First Name:

Surname:

Address:

Postcode:

Phone:

Mobile:

Email:

Quality education from Kindergarten to Year 12 in a safe and caring environment

Principal: Melanie Wait

Murray Street Tooleybuc NSW 2736 T 03 5030 5422 F 03 5030 5408 E Tooleybuc-c.school@det.nsw.edu.au

VOLUNTARY CONTRIBUTIONS 2016

The New South Wales Government provides much of the necessary equipment and materials for the efficient running of the school. However, to keep up to date with the latest textbooks and to supply materials for such subjects as technics, craft and food technology, parents are asked to make a voluntary contribution. These are reviewed each year and kept to an absolute minimum, and are payable at the beginning of each school year.

These contributions are important in ensuring that we can optimize learning opportunities for students. Your cooperation in this regard is greatly appreciated.

Technology Fee	All Years F to 12	\$10.00
Current voluntary contributions including Technology Fee	Infants and Primary	\$52.00
	Years 7 + 8	\$98.00
	Years 9 + 10	\$57.00
	Years 11 + 12	\$57.00
Design and Technology Food:	Year 9 + 10 elective	\$65.00
Industrial Technology	Year 9 + 10	\$52.00 plus materials
Information & Software Technology	Year 9 + 10	\$52.00 plus materials
VET Hospitality	Stage 6	\$185 (\$25 Uniforms/ \$160 Pracs)
Industrial Technology	Stage 6	\$80.00

Wanted

Second hand uniforms in good condition. If your child has outgrown their uniform please consider donating it to the school.

LOST UNIFORMS

Please name your uniforms so we can return items that are misplaced.

School Bags

Tooleybuc Central School has school bags which are available to purchase from the front office.

Large \$58.00



Tooleybuc Central School Uniforms

TCS dark green bucket school hats \$15, are available for purchase from the front office

Tops

Primary:	Dark green polo shirt (TCS)
	Jumper (TCS)
	Girl's summer culottes/green check dress
Secondary:	Green/yellow polo shirt (TCS)
	Rugby Jumper (TCS)

Pants

Primary & Secondary Boys	Grey School Pants/ Grey Max Dax
Primary Girls	Green school pants/ Green Knee Length Shorts
Secondary Girls	Black school pants/ Green Knee Length Shorts

Sport

Primary & Secondary	Yellow polo shirt
	Green basketball shorts
	Green tracksuit pants
	Sneakers

Shoes

Primary & Secondary Boys & Girls	Black Leather Shoes
----------------------------------	---------------------

Stockists of School Uniform

Outdoors First


Garments will need to be ordered so they can be embroidered, however they are a very reasonable price and the turnaround is very quick.

Clark's Gift Salon

183 Campbell Street, Swan Hill – Phone 50321616

PSW

Bootleg Pants – Polyester 465 Bottle can be purchased online at <http://www.psw.com.au/>



Stuck?

**Need a hand with
Maths,
Science,
English,
Assignment Research or
Study Skills?**

Don't forget the Swan Hill Regional Library offers students in Years 4-12 & TAFE **Free Online Tutoring.** Expert tutors are online and waiting to help Monday through to Friday from 4pm – 8pm!

Connect from your library or from home at:
<http://www.swanhill.vic.gov.au/quicklinks/libraries>
See you online!

Questions?
Call the Swan Hill Regional Library on (03) 50 362480

STUDENT ASSISTANCE SCHEME APPLICATION FOR SUPPORT

If you would like an application for support please contact the school.

Canteen Menu 2016

Term 1

Lunch (all hot food must be ordered)

Pie	\$3.00
Sausage Roll	\$2.00
Party Pie	\$1.00
Mini Pizza (Ham & Pineapple or Ham & Cheese)	\$2.00
Dim Sims (soy sauce – no extra charge)	\$0.50
Chicken Nuggets	\$0.50
Tomato Sauce	\$0.20

Snacks (do not include in lunch order, students to purchase at lunch time)

Muffins (Double Choc)	\$1.60
Bulla Frozen Yogurt (Strawberry and Mango)	\$1.60
Chips (Honey Soy)	\$1.00
Raspberry Twists	\$0.20

Drinks

Big M (Chocolate, Strawberry & Iced Coffee)	\$2.00
Play water - 350ml (purple, lemonade, red, fruit tingle)	\$2.00
Prima (as drink or frozen) (apple/blackcurrant and tropical)	\$1.20

Lunch orders are to be written on a paper bag including students name and year (with money inside). Orders are then to be taken to front office by students or sent with the rolls.

Please remember to include only hot food and drinks on student's lunch orders. All snacks are to be purchased from the canteen at lunchtime.

Please note Raspberry Twists are now **.20c** each

CANTEEN ROSTER**Term 2**

13 th May	Annette Blachford & Kate Tallon
20 th May	Peta Hickey & Paula Pyatt
27 th May	Sue Domaille & Leisa Lyons
3 rd June	Tracey Domaille & Sue Williams
10 th June	Kelli Edelsten & Cindy Funnell

Thank you to all volunteers who helped in the Canteen this year. More volunteers are always welcome.

If you are unable to do duty on your rostered day please contact someone else on the roster and arrange a swap.

Canteen duty is from
10:30 am until 2.30pm.

Hospice

We have a donation jar at the front office for the Swan Hill Hospice, if you have any small loose change it will go to a wonderful cause.

'000'

If you have an emergency and need to call an ambulance and live in the Tooleybuc area, when asked

'Police, Fire, Ambulance'

Respond,

'Bendigo Ambulance'

This will minimise confusion as to where the ambulance will originate from and ensure a quick response

Are you or someone you know
experiencing

**DOMESTIC or FAMILY
VIOLENCE**

Local Support is Available

Call

5881 7411

And ask to speak to a
DV support worker

St Vincent de Paul Society NSW
Support Services



Tooleybuc Sporting Club Ltd.

Phone: 03 5030 5476

Open Daily from 11.00am till late

UPCOMING ENTERTAINMENT FOR 2016

May
Tooleybuc Rocks
19th to 22nd May 2016
Enjoy a great weekend of Rock & Roll

WEEKLY ACTIVITIES

Mon: Poker 7.30pm
Tues: Bingo 'eyes down' @ 7.30pm
Wed: Members Draw @ 7.30pm,
 Raffles between 7pm & 9pm
 Wed/Sun Snowball Draw (LTPS/15/03148)
 Jackpots \$50.00 each Wednesday &
 Sunday if not claimed
 Line Dancing 7.30pm
Thurs: Bingo 'eyes down' @ 11.30am
Fri: Raffles @ 8.30pm (approx)
 Members Friday Fortune Draw @
 9.30pm (approx) Jackpots \$50 each
 week if not claimed (LTPS/14/04455)
Sun: Raffle @ 8.00pm (approx)
 Wed/Sun Snowball Draw (LTPS/15/03148)
 Jackpots \$50.00 each Wednesday & Friday
 if not claimed

CHEF'S SUGGESTIONS

Every Friday night the Bistro have a
 Chef's Suggestions Specials Board.
 It consists of around 4 different dishes at
 affordable prices.
 They are only available until stock runs out.
 So come along on Friday Nights & enjoy a great
 meal

Weekday Specials

Dine in Only

Monday Family Night Kids Meals 1/2 price
Tuesday Early Bird Roast 6.00 to 7.00pm \$12.00
Wednesday Parmy Night \$12.00
Thursday Steak Night \$15.00



**WAKOOL
SHIRE
COUNCIL**
naturally

MEDIA RELEASE

Wednesday, 4 May 2016

COMMUNITY ENCOURAGED TO ATTEND WATER WORKSHOPS

Wakool Shire Council is encouraging community members to be involved in upcoming Water Community Workshops, to be held across the Shire this month.

The workshops are part of a research project by the Murray Darling Basin Authority and are being facilitated by Dr Michael Fortunato from Sam Houston State University in Texas. The project is aimed at improving community adaptability to water management changes through effective community driven engagement and planning.

Wakool Shire Council has been chosen to take part in the research project along with three regional areas in Australia – St George/Dirranbandi in Queensland and Coleambally and Warren in New South Wales.

As part of the project, Dr Fortunato will conduct a series of workshops with community and industry leaders in the Basin, including at towns across Wakool Shire from the 9 to 23 May.

The workshops will discuss the challenges and changes facing rural towns and provide an opportunity for people from different sectors to share knowledge and work together on a plan to adapt to and manage change. This includes reduced water availability as a result of climate change, drought and water reform.

Community workshops will be held at Barham, Moulamein, Wakool, Murray Downs and Tooleybuc on the following dates:

Barham/Wakool

Monday 9 May, 6pm
cluBarham Auditorium and:

Monday 23 May, 6pm
Wakool Memorial Services Club

Tooleybuc

Wednesday 11 and Thursday 26 May, 6pm
Tooleybuc Sporting Club

Murray Downs

Thursday 12 and Wednesday 25 May, 6pm
Murray Downs Golf & Country Club

Moulamein

Friday 13 and Tuesday 24 May, 6pm
Moulamein Bowling Club

For further information or to register your interest in attending these workshops, please contact Council's Moulamein office on 03 5887 5007.

ENDS

Budweld Nursery*Glenn & Julie Fultton*

Specialising in
Mop Tops – Lily Pillys – Roses
Citrus and more
67 Hobson Road, Nyah 3594
Budweld5@bigpond.com.au
www.budweldnursery.com.au
Direct Sales by appointment only
0409 967 086

Every Friday Goodnight Express



This vital service is available to any community member wishing to access services in Swan Hill

Departing Goodnight:	9.30 Post Office
Departing Tooleybuc:	9.45 Post Office
Departing Koraleigh:	10.00 Post Office
Departing Nyah:	10.10 Post Office

Burtens General Store

Drop off point:	10.50 Clock Tower
Bus Stop	
	Swan Hill
Departs Swan Hill	1.30pm Woolworths
Car Park	(Campbell St side)

Cost for a **RETURN** ticket: Adults \$8.00
Children (u 16) \$5.00

First time passengers will be required to complete a registration form
Please phone Michelle at HAC Tooleybuc on 5030 5252 for more information
An initiative of Wakool Shire HACC Services, funded by N.S.W. Ministry of Transport
15th January 2014

CRAIG DOMAILLE PLUMBING

For Honest Reliable Service call
Craig on 50305382
50305594 Fax

NOW AVAILABLE
1.8 Tonne Mini Excavator
Septic Tank Cleaning/Installation
Hot & Cold Water Installation
Gas Works
Roofing
Gas & Wood Heater Installation
Ducted Air Conditioner
Services/Installation
Agent for Lowara Pumps

Free no obligation quotes
Plumbing since 1985

Remedial Massage

& Manipulation
Reflexology Reiki Master
Jenny Arblaster
Wood Wood Vic
Ph: 03 50305126 0428 305126

**TOOLEYBUC COMMUNITY
HEALTH CENTRE**

Open Mon-Fri 9.00am-4.00pm

Phone: 03 50305189

CLINIC HOURS ARE:

9.00-10.00am & 1.00-3.30pm

All Clinics are free

EARLY CHILDHOOD CLINIC:
Mondays-Wednesdays -1.00-3.30pm

IMMUNISATIONS CLINIC:
(appointment necessary) Third Tue in month
Tuesday 17th May

Diabetes Nurse- available by
appointment only Wed

MENTAL HEALTH: Monthly by
Appointment

Visiting once per month or contact
ACCESSLINE (1800 800 944)

WOMEN'S HEALTH SERVICE:
Every 2nd Month

DIETITIAN CLINIC:
Tuesday
Appointments available

Podiatrist
(ph 50339390 for an apt).
Thursday 18th February

Speech Pathologist
(1st Thursday of the month)
Telephone Swan Hill District Health for
appointments and enquires **5033 9390**

In an emergency contact your G.P.
Manangatang- 50351215
Balranald- 50201055
Nyah West- 50302456
Swan Hill- 50331711 Or call '000'



LEN MCPHERSON
REGISTERED ELECTRICAL CONTRACTOR
Vic. R.E.C 2553 NSW 144714C

122 Monash Ave
NYAH WEST 3595
A.H. (03) 5030 2725

EMAIL phantastic2000@hotmail.com

MOBILE: 0418 582 855
Box 209, Nyah West, 3595

NYAH DISTRICT GOLF CLUB
Golf Club House can be hired for
MEETINGS PARTIES
WEDDINGS etc
Inquiries Phone 50302087

LUCKY PHIL'S*The One Stop Shop*

Budget Rite & Take-Away Food Store
OPEN 7 DAYS A WEEK 6.30am - 7:00pm

Large Range of Groceries,
Take-away Foods,
Pizzas, Rotisserie Chickens,
Fruit & Vegetables, Eftpos Available

Murray St, Tooleybuc • (03) 5030 5090



"Old Tooleybuc
Doll Cottage"
Open 10 am daily
53 Cadell St
Tooleybuc

A delightful display of over 400
beautiful dolls that is sure to put a
smile on your face.

FEE.

A gold coin donation,
Proceeds donated to the local school for
gardens and outdoor furniture.

**Tooleybuc and District
Carpet Cleaning Service**

For domestic and commercial
steam cleaning at competitive rates.



Ring David Thompson on
0447 000348
for a free, no-obligation quote.

WANTED

The Wakool Shire Home and Community
Care (HACC)
are in need of volunteer drivers in the
Tooleybuc, Goodnight and Koraleigh
areas.

Men or Women. Young or Old!

Tooleybuc HACC Outreach Coordinator
50 305 252

"Helping others to keep small communities
strong."

SHEDS

Industrial, rural & domestic

Agents for Tru-Built &
McDonald Steel

Real Sheds – Real Steel

Matthew Loats Builder P/L
Phone: 0427 240 376 Fax:
(03) 50 305 122

Student Absences Note

Name: _____
 Class: _____
 Teacher: _____

This student was absent from _____
 / / to _____
 / /
 due to the following:

- ☐ Illness
☐ Injury
☐ Medical/Dental Appointment
☐ Family Commitments
☐ Other give reason

Additional comments: _____

Signed: _____
 Date: _____


Tooleybuc Central School
Bus Variation to Routine

child/children _____

_____ will not be
 travelling on the

bus on _____
 (Date)

- ☐ I will be collecting them
☐ They will be travelling on
 _____ bus.
☐ Other (Please explain)

Note: Some buses do not allow other students to
 travel on their buses. Please contact the bus
 driver to ensure approval.

Parent
Signature: _____

Date: _____

STUDENT ASSISTANCE SCHEME
APPLICATION FOR SUPPORT
Personal Details

Student's Name: _____ Class/Year: _____

Home Address: _____

Parent/Guardian Name: _____

Family Support Reason Support is Needed

Support Details Assistance can be provided with uniform/books/excursions

Details of Request:

Amount

*The information provided will be treated in confidence. Please forward this application to the
 Principal. There is a limit to the amount each child can access.*

Signature of parent/guardian: _____ Date: _____

Approved/Principal Signature: _____ Date: _____

CALENDAR 2016

WEEK 3 MAY TERM 2	9	10 Breakfast Club Open B/G AFL @Hay NAPLAN Accountancy Week LD & ES	11 Breakfast Club NAPLAN Accountancy Week LD & ES	12 Breakfast Club NAPLAN Accountancy Week LD & ES Scripture commences	13 Accountancy Week LD & ES
WEEK 4 MAY TERM 2 SPC WEEK	16	17 Year 7 Immunisations (2/3) U15 B/G AFL Deni	18 Tracky Dack Day	19 Hippo Hippo Yrs K – 2 10am to 12pm	20 PSSA X- Country @Wakool- Burraboi Public Sch
WEEK 5 MAY TERM 2	23	24 Grip Leadership	25	26 Scripture	27
WEEK 6 MAY/JUNE TERM 2	30	31	1	2	3 Primary Assembly Secondary Zone Athletics @Deni